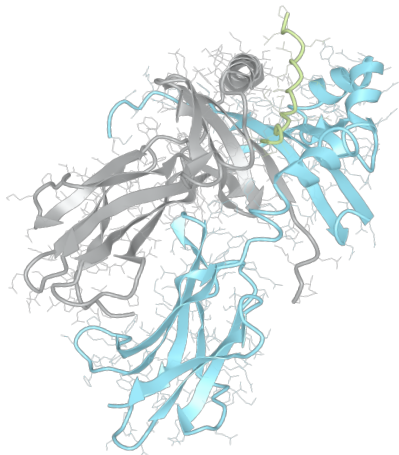


# Product datasheet



## sHLA– DPB1\*18:01bio DPA1\*01:04bio

DPB1\*1801, DPB11801, DPB1\*18, DPB18  
DPA1\*0104, DPA10104, DPA1\*01, DPA01

<b>Serological Name</b>	-
<b>Peptide Load</b>	Endogenous
<b>Modification</b>	Unmodified
<b>Conjugation</b>	Biotin
<b>SKU</b>	DPB11801/DPA10104bio

### Product Description

<b>Allele Name</b>	DPA1*01:04 DPB1*18:01
<b>HLA Class</b>	HLA Class II
<b>HLA Gene Locus</b>	HLA-DP
<b>Alternative Allele Name A Chain</b>	DPA1*0104, DPA10104, DPA1*01, DPA01
<b>Alternative Allele Name B Chain</b>	DPB1*1801, DPB11801, DPB1*18, DPB18
<b>Description</b>	Recombinant, truncated Class II soluble Human Leukocyte Antigen (sHLA), naturally folded and glycosylated, loaded with endogenous peptides.
<b>Serological Name</b>	-
<b>Serological Split</b>	-
<b>Allele Frequency [World Population]</b>	
<b>A chain</b>	0.5%
<b>B chain</b>	2.0%

### Associated products

[DPB11801/DPA10104](#)  
[DPB11801/DPA10104pe](#)

## Product Specification

<b>Product name</b>	HLA-DPB1*18:01/DPA1*01:04bio
<b>HLA Species</b>	Human
<b>Host Cell Line Species</b>	Mouse
<b>Clone Designation</b>	C11E6
<b>Tail Specification</b>	ZP
<b>Peptide Load</b>	Endogenous
<b>Modification</b>	Unmodified
<b>Conjugation</b>	Biotin
<b>Complexity</b>	Monomer
<b>Protein Format</b>	Recombinant, truncated, zipper-stabilized, soluble, non-modified, biotinylated, endogenously loaded
<b>Storage Temperature</b>	4°C (This product should be stored undiluted)
<b>Form</b>	Liquid
<b>Concentration</b>	300.0 µg/µl
<b>Formulation</b>	PBS/0.02% Sodium Azide
<b>pH</b>	7.4
<b>Purification Method</b>	Affinity Chromatography
<b>Grade</b>	Research Use Only [RUO]
<b>Authentication Verification</b>	Sequence Based Typing

## Protein Sequences

<b>Alpha Chain Sequence</b>	IKADHVSTYA AFVQTHRPTG EFMFEFDDDE MFYVDLDKKE TVWHLEEFQ AFSFEAQGGL ANIAILNNL NTLIQRSNHT QATNDPPEVT VFPKEPVELG QPNTLICHID KFFPPVLNVT WLCNGELVTE GVAESLFLPR TDYSFHKFHY LTFVPSAEDF YDCRVEHWGL DQPLLKHWEA QEPIQMPETT EVDGGGGGAQ LEKELQALEK ENAQLEWELQ ALEKELAQ
<b>Beta Chain Sequence</b>	RATPENYVYQ GRQECYAFNG TQRFLERYIY NREEFVRFDS DVGEFRAVTE LGRPDEEYWN SQKDILEEKR AVPDRMCRHN YELVGPMTLQ RRVQPKVNVS PSKKGPLQHH NLLVCHVTFD YPGSIQVRWF LNGQEETAGV VSTNLIRNGD WTFQILVMLE MTPQQGDVYI CQVEHTSLDS PVTVEWKAQS DSARSKVDGG GGAQLKKKL QALKKKNAQL KWKLQALKKK LAQ

## Related Products

[DPB10501/DPA10202bio](#)  
[DPB10401/DPA10201bio](#)  
[DPB10402/DPA10103bio](#)  
[DPB10201/DPA10103bio](#)

## Applications

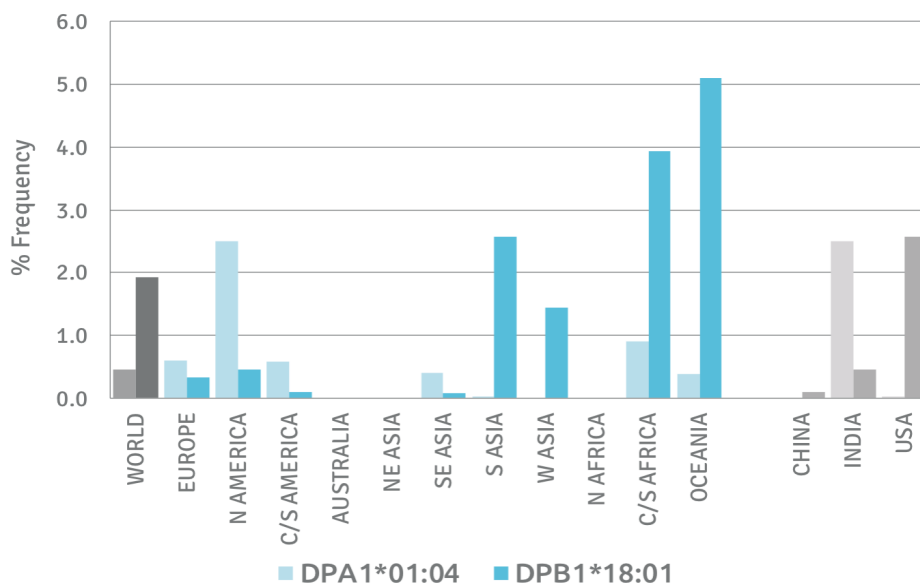
HLA Sandwich ELISAs  
 HLA Direct ELISAs  
 HLA-Sera Antibody Assays  
 HLA Controls in ELISA Assays  
 HLA Assay Standards  
 HLA Blocking Assays  
 HLA Neutralizing Assays  
 HLA Competition Assays  
 HLA Bead Assays  
 HLA Immunization Procedures

## Recommended Antibodies

-

## Allele Frequency

### Worldwide Allele Frequency



Please note:

ALL PRODUCTS ARE FOR RESEARCH USE ONLY. NOT FOR COMMERCIAL USE IN DIAGNOSTIC PROCEDURES.  
 For more information, please visit our Policies section on our website. For licensing inquiries, please contact

[licensing@hlaprotein.com](mailto:licensing@hlaprotein.com)

HLA Protein  
 PURE PROTEIN LLC

